

# SMS-2210

## SMS Control Module



A warm house in cold winter days and a cool house in hot summer days... Imagine that your home welcomes you in the perfect condition due to weather. What if you could control your boiler or air conditioner remotely, before you got home? Wouldn't that be nice?

**Not only boiler or air conditioner but you can control lots of electronic devices remotely. All you need is your cell phone...**

SMS-2210, SMS Control Module allows you to control your electronic devices via GSM network, by sending plain commands as text messages. 8 electronic devices at most, can be connected to the module and up to 8 users can be defined to control the devices. (Image-1)

Commands can remain as default or can be customized according to requirements. (Image-2) If commands are forgotten, by sending "?" as text message, a message from the module will be received that contains the recent commands and current state. The same message also will be received when missing or incorrect command is entered.

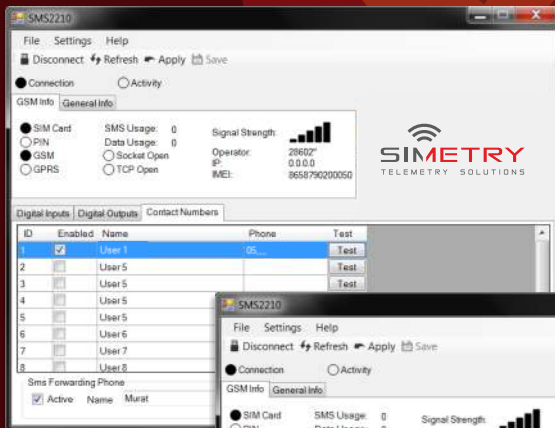


Image-1

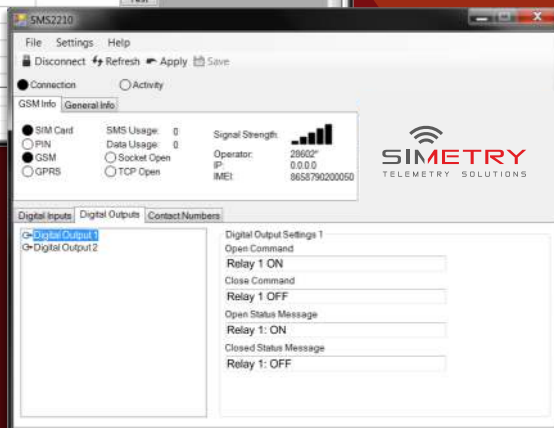
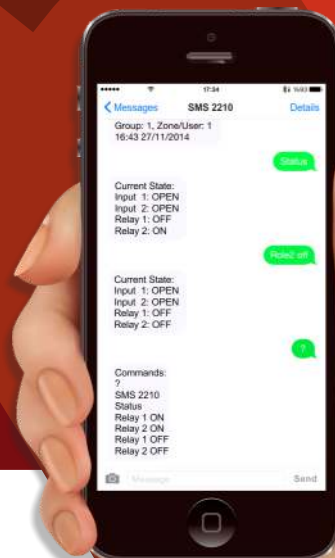


Image-2



# SMS-2210

## SMS Control Module

- 2 NC/NO dry contact relay output 220V/7A<sup>1</sup>
- 2 digital inputs<sup>2</sup>
- 12V/1A supply input<sup>3</sup>
- LEDs indicating the energy and network status<sup>4</sup>
- Fully customizable commands (Image-3)
- Fully customizable status information messages (Image-4)
- Rail mounting bracket, suitable for mounting inside the board (Image-5)
- Various antenna options

Image-3

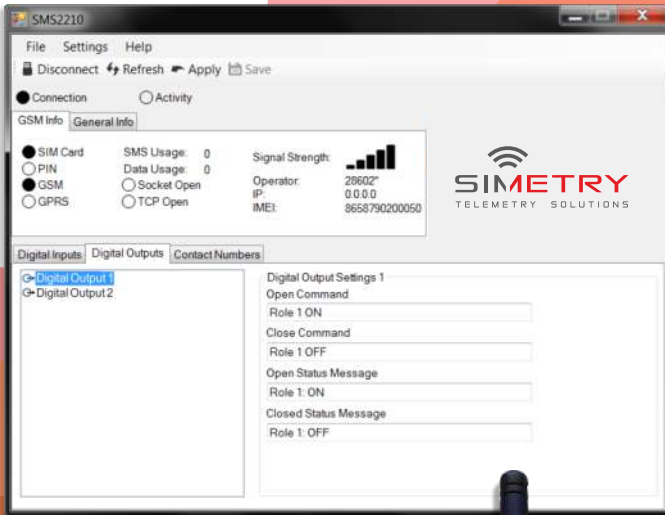


Image-4

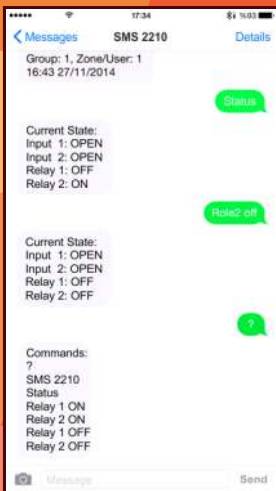
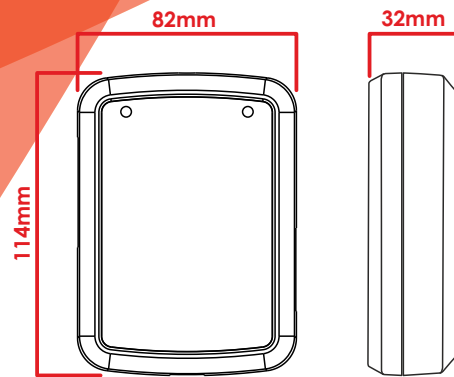
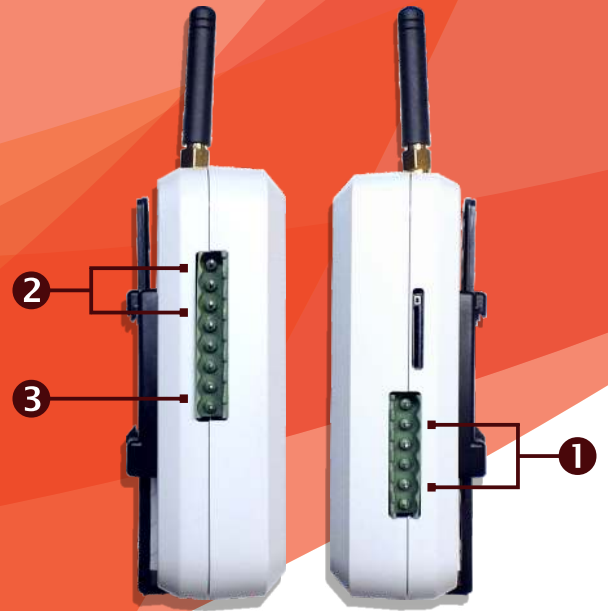


Image-5



Manufacturer: INOMES Elektronik San. ve Tic. Ltd. Şti.  
Turgut Ozal Bul. No:150 Kat:2 34775  
Serifali / Umraniye / İstanbul / TURKEY  
Tel: +90 216 466 36 10 Fax: +90 216 466 36 12  
www.inomes.com.tr

  
**SIMETRY**  
TELEMETRY SOLUTIONS